

Liz Overstreet Instruction Redesign

Portable Gas Grill

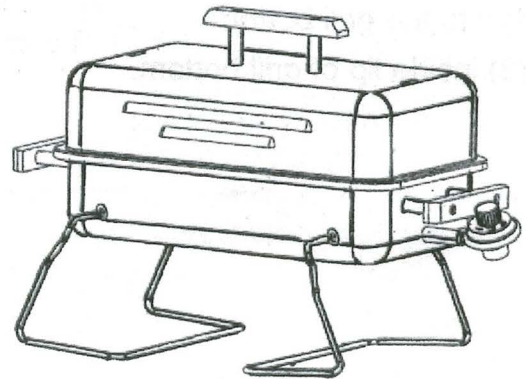
Assembly Instructions Model # BQ - 1536

**WARNING: FOR OUTDOOR USE ONLY.
DO NOT PLACE ON COMBUSTIBLE SURFACE.
KEEP CHILDREN AWAY FROM HOT GRILL.**

Do not store spare gas cylinders or use gasoline or other flammable liquids or vapors in the vicinity of this or any other appliance.

FOR YOUR SAFETY, IF YOU SMELL GAS:

1. Shut off gas supply.
2. Extinguish any open flame.
3. Open lid.
4. If odor persists, call your gas supplier or fire department immediately.



TOOLS NEEDED FOR ASSEMBLY

Pliers
Flat-head screwdriver
#2 Philips screwdriver

USE CAUTION

Use care when handling metal parts with sharp edges that could cut.

READ ALL INSTRUCTIONS

Check that parts are present before beginning assembly.
Save this instruction manual in your files for later use.

ASSEMBLY INSTRUCTIONS

IMPORTANT: DO NOT tighten screws until grill is completely assembled

Please refer to **Figure 1** below while assembling the portable gas grill. We recommend following the directions in the order shown:

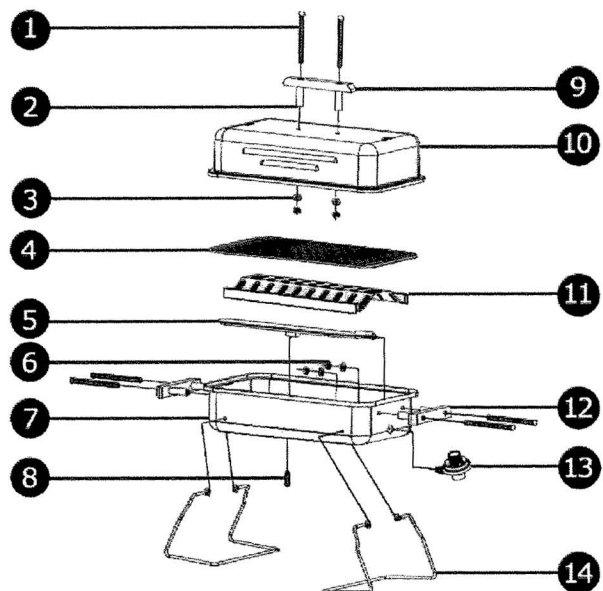
1. Screw lid wooden handle **9** through bakelite tube **2** with long screw, washer **3** and nut **6** onto lid **10**
2. Similar to step 1, attach side wooden handle **12** onto grill bottom **7**
3. Insert wire leg **14** into holes in grill bottom with washer **3**
4. Attach burner **5** to the grill bottom with small screw **8**
5. Insert fitting of regulator **13** into burner
6. Put the heat plate **11** into the grill bottom
7. Place cooking grid **4** inside lip of grill bottom
8. Tighten all screws

Figure 1. Portable Gas Grill Parts and Assembly Diagram

PARTS LIST

PART	DESCRIPTION	QTY
1	Long Screw	6
2	Bakelite Tube	6
3	Washer	10
4	Cooking Grid	1
5	Burner	1
6	Nut	6
7	Grill Bottom	1
8	Small Screw	1
9	Lid Wooden Handle	1
10	Lid	1
11	Heat Plate	1
12	Side Wooden Handle	1
13	Regulator	1
14	Wire Leg	2

ASSEMBLY DIAGRAM



OPERATING INSTRUCTIONS

INSTALLING THE FUEL CYLINDER

Obtain a disposable fuel cylinder from your local dealer. Make sure top outlet on cylinder is free of dirt. Lubricate threads on regulator valve with a small amount of petroleum jelly. Thread fuel cylinder onto regulator valve and hand tighten firmly.

PRESSURE REGULATOR

A pressure regulator must be used with the propane gas cylinder. Do not attempt to disassemble or adjust regulator. If you suspect a leak, test with soap and water. If this part ever fails, it will leak, reduce fuel supply or shut off fuel supply.

LEAK TESTING INSTRUCTIONS

Test for leaks each time a fuel cylinder is connected to the regulator. Never use a flame to leak test. Make a soap solution with equal parts of liquid soap and water. Apply solution to the connection atop of the fuel cylinder. If bubbles form, there is a leak that must be eliminated before you proceed. Remove soap residue with cold water and towel dry.

LIGHTING THE GRILL

WARNING: KEEP LID OFF GRILL WHEN LIGHTING.

Any attempt to light burner with the lid closed may cause an explosion.

Position flame up through lighter hole located off center of bottom shell, while turning regulator valve knob to "light" position. After lighting, flames should appear in bottom burner. Be sure all burner ports are lit. If burner does not light on first try, turn off gas and wait 5 minutes for gas to clear before trying again. If burner flame goes out when the unit is in use, always turn gas control to "OFF" immediately. Open lid and wait 5 minutes for unburned gas to clear before re-lighting burner.

TO SHUT OFF GRILL: *Turn regulator knob to "off" position.*

NOTE: Before cooking for the first time, operate the grill for 15 minutes with top closed and gas control on high. This will heat clean internal parts and dissipate odor from the paint finish. Flavor of food will improve with use.

CAUTION: Use care to avoid burn hazard from possible grease flare-up. Do not expose any part of your body directly above cooking area.

CLEANING INSTRUCTIONS

Allow the unit to cool before cleaning. Keep bottom vent openings clear by removing internal parts and scraping of grease. Use hot, soapy water and rinse after use. Clean the cooking grid with a wire brush as needed. DO NOT use a self-cleaning oven to clean any barbecue part to prevent damage to parts.

GENERAL INFORMATION

OPERATING CLEARANCES

Keep combustible surfaces at least 12" (30 cm) away from sides, front and rear of the grill. Do not locate this appliance under unprotected overhead combustible surfaces. Disconnect the gas supply cylinder when this appliance is not in use. Keep appliance area clear and free from combustible materials, gasoline and other flammable vapors and liquids. Do not obstruct the flow of combustion and ventilation air.

When using a cylinder with this grill it must be equipped with:

- The pressure regulator supplied with this appliance must be used it will limit gas output to not more than a 17" water column
- A safety relief device having direct communication with the vapor space of the cylinder.
- Markings to indicate DOT number
- A supply system arranged for vapor withdrawal

GENERAL INFORMATION

This appliance is designed to operate using propane gas. Propane gas is heavier than air. Gas tends to collect in low areas. It is important that there are no leaking connections on your gas grill, as a fire or explosion could result.

ABOUT PROPANE GAS CYLINDERS

This appliance is designed to operate with one 16.4 oz. Capacity disposable cylinder (DOT 39 Cylinder) that is 7-3/8" high.

IMPORTANT: DO NOT ATTEMPT TO REFILL ANY 16.4 oz. DISPOSABLE FUEL CYLINDER.

One pound of propane gas has slightly more than 21,000 BTU's of heat energy. Thus, the grill (rated at 10,000 BTU) will cook for approximately 2 hours with the burner set on high, using one pound of gas.

SAFE HANDLING OF PROPANE GAS

The cylinder must be installed, transported and stored in an upright position and should not be dropped or handled roughly. When the appliance is to be stored indoors, the connection between the propane gas cylinder and the appliance must be disconnected and the cylinder must be removed from the appliance.

When the propane gas supply cylinder is not disconnected from the appliance, the appliance and cylinder must be stored outdoors in a well-ventilated space. The cylinder should never be transported or stored where temperature can reach 125° F.

CONTACT INFORMATION

123 Anystreet Drive • Anytown, USA 01234 • (888) 555-1234

More product information is available at our website: <http://www.grills-r-us.com/>

M A D E I N T A I W A N